



SAP Concur 

Brochure | Healthcare

# A Streamlined Approach to Managing Healthcare Spend

# Gain Visibility into Your Entire Spend

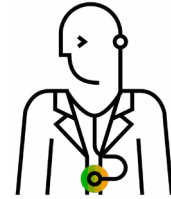
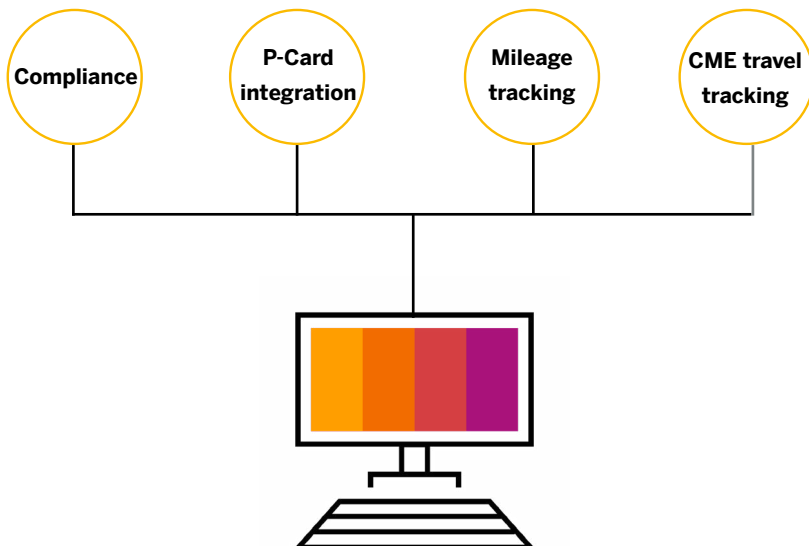
Healthcare organizations across the country faced many spend management complexities due to the COVID-19 pandemic that caused significant strain on budget and resources, including:

- Inability to access data remotely
- Lack of visibility into spend
- Unreliable and time-consuming manual processes
- Antiquated or disjointed systems that required an in-office presence to process expenses and invoices

The pandemic accelerated the need for digital transformation. Implementing an integrated, automated spend management solution will cut costs, and provide real financial and resource savings to your healthcare organization by helping you accurately manage and control spend from anywhere.

## CAPTURE SPEND DATA AND INCREASE COMPLIANCE

SAP Concur solutions for healthcare integrates travel, expenses, invoices, and Continuing Medical Education (CME) spend for greater visibility into budgets, increased compliance, and ease of use for better employee experiences all on a single, cloud-based solution.



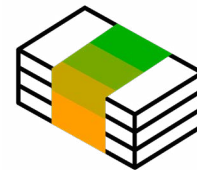
**40%**

of healthcare customer's travel and expense (T&E) falls within CME spend.<sup>1</sup>



**35%**

of employees admitted to inflating their mileage reimbursement.<sup>2</sup>



**22%**

of fraud cases in healthcare are expense reimbursement fraud.<sup>3</sup>

# Simplify the Process With Back-Office Automation

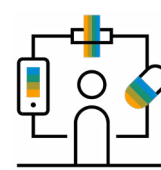
There is nothing more frustrating than dealing with data housed in multiple systems, or even multiple systems per office, clinic or hospital. The ability to access or view this data in a single place is all but impossible. With SAP Concur solutions, you can run expense, mileage tracking, invoice and P-Card systems on a single platform, providing the same user experience across formats (including mobile).



No more manual data entry or paper expense reports.



Chasing receipts and reconciling transactions are a thing of the past.



Standardization across your offices, clinics and hospitals with a single solution that integrates with your systems.

SAP Concur solutions take the work out of spend management, making details and processes effortless, so it's easier for doctors and staff in your healthcare organization to focus on what matters most.

## EASY TO USE MOBILE TOOLS

Simple, mobile tools that automatically capture receipt images, categorize charges, and calculate actual mileage driven, reduce the time your clinicians, management, and finance staff have to spend on their expenses.

## VISIBILITY INTO CME SPEND

Continual monitoring ensures education dollars are spent how and where they should be, and that individuals and departments are staying within their allowed stipends.

## ENSURE POLICY COMPLIANCE

Set controls for compliance based on your unique policy and remind travelers to stay inside spending guidelines. As for meeting compliance regulations, simply pull a report of all expenditures with the applicable physician's name to track their spend.

## ACTIONABLE DATA INSIGHTS

Comprehensive reporting helps you manage spend and control your budget by giving you:

- Visibility into spend data with meaningful analytics to track spending behaviors and compliance
- Data from custom reports and dashboards that meet your healthcare organization's unique requirements delivered right to your inbox
- Detailed reports on utilization, rebates, and other key metrics to monitor and control spend more effectively

## ABOUT SAP CONCUR

SAP® Concur® is the world's leading provider of integrated travel, expense, and invoice management solutions, driven by a relentless pursuit to simplify and automate these everyday processes. With SAP Concur, a top-rated app guides employees through every trip, charges are effortlessly populated into expense reports, and invoice approvals are automated. By integrating near real-time data and using AI to audit 100% of transactions, businesses can see exactly what they're spending without worrying about blind spots in the budget. SAP Concur eliminates yesterday's tedious tasks, makes today's work easier, and helps businesses run at their best every day.

Learn more about solutions for [Healthcare at concur.com](https://www.sap.com/healthcare).

### Sources:

<sup>1</sup>SAP Concur customer data

<sup>2</sup>Motus, [Mobile Workforce Benchmark Report](#), 2018

<sup>3</sup>ACFE, [Report to the Nations](#), 2020

#### GB HEALTHCARE ENT enUS (21/07)

© 2021 SAP SE or an SAP affiliate company. All rights reserved.

No part of this publication may be reproduced or transmitted in any form or for any purpose without the express permission of SAP SE or an SAP affiliate company.

The information contained herein may be changed without prior notice. Some software products marketed by SAP SE and its distributors contain proprietary software components of other software vendors. National product specifications may vary.

These materials are provided by SAP SE or an SAP affiliate company for informational purposes only, without representation or warranty of any kind, and SAP or its affiliated companies shall not be liable for errors or omissions with respect to the materials. The only warranties for SAP or SAP affiliate company products and services are those that are set forth in the express warranty statements accompanying such products and services, if any. Nothing herein should be construed as constituting an additional warranty.

In particular, SAP SE or its affiliated companies have no obligation to pursue any course of business outlined in this document or any related presentation, or to develop or release any functionality mentioned therein. This document, or any related presentation, and SAP SE's or its affiliated companies' strategy and possible future developments, products, and/or platform directions and functionality are all subject to change and may be changed by SAP SE or its affiliated companies at any time for any reason without notice. The information in this document is not a commitment, promise, or legal obligation to deliver any material, code, or functionality. All forward-looking statements are subject to various risks and uncertainties that could cause actual results to differ materially from expectations. Readers are cautioned not to place undue reliance on these forward-looking statements, and they should not be relied upon in making purchasing decisions.

SAP and other SAP products and services mentioned herein as well as their respective logos are trademarks or registered trademarks of SAP SE (or an SAP affiliate company) in Germany and other countries. All other product and service names mentioned are the trademarks of their respective companies.

See <http://www.sap.com/corporate-en/legal/copyright/index.epx> for additional trademark information and notices.